

Chez Bugi

Catered
Sleeps 12



WHITE MOUNTAIN
CHALETs

Situated in St Martin de Belleville, this luxury private chalet sleeps 12 across 6 en-suite bedrooms and has great village, piste & mountain views.

Chez Bugi is a really luxurious contemporary chalet providing spacious living areas, a hot tub on the terrace & sauna in an unrivalled ski-in, ski-out location.



What's included?

- + A talented & dedicated staff team of fine dining chef, professional host and chauffeur, together within-resort management team
- + In-resort chauffeur service from 8am - 11pm (St Martin de Belleville village only)
- + Luxury accommodation
- + Ski in, ski out location
- + Spa facilities: hot tub and sauna
- + Breakfast and afternoon tea on 7 days
- + 5 course dinner on 5 nights (your chalet chef and host have two nights off)
- + 1 evening of help yourself Savoyard supper
- + A carefully selected choice of premium wines
- + Champagne reception on first evening
- + Complimentary bar (wine, sparkling wine, spirits, beers, soft drinks and mixers)
- + Artisan gin bar with premium tonic
- + Egyptian cotton linen, towels, bathrobes and slippers. (Towels are changed mid-week on request)
- + Luxury toiletries
- + Housekeeping on each day of your stay
- + Wi-Fi
- + Lift between all floors
- + British Satellite TV, DVD player and selection of DVDs
- + Sonos music system in the main living area
- + A selection of board games

Chez Bugi



WHITE MOUNTAIN
CHALETs

The sumptuous bedrooms are furnished and accessorised in a modern alpine style with crisp white linen, sumptuous duvets and super soft faux furs. Each en-suite bathroom includes a hairdryer, Egyptian cotton towels and luxurious toiletries.

Bedroom 1 (Master)

Situated on the third floor, this large bedroom is decorated in a palette of charcoals & browns and clad with local woods.

- + Superking bed
- + En-suite bathroom with bath, walk-in shower, double sinks & WC
- + Wall mounted smart TV
- + Built-in wardrobes & dressing area
- + Balcony overlooking the piste



Bedroom 2 (Master)

Situated on the third floor, this bedroom is decorated in warm taupe & browns with luxurious fabrics & furnishings.

- + Superking bed
- + Balcony looking towards mountains
- + Built-in wardrobes
- + En-suite bathroom with bath and over-bath shower, double sinks & separate WC



Bedroom 3

Situated on the ground floor, this large bedroom is decorated in a soft palette of creams and greys.

- + Superking bed
- + En-suite bathroom with bath, over-bath shower, double sinks & separate WC
- + Built-in wardrobes
- + Access to terrace through sliding doors & views of the piste



Bedroom 4

Situated on the ground floor, this light room is decorated in soft taupes with views down the piste to the village.

- + Superking or Twin beds
- + En-suite bathroom with walk-in shower, sink & separate WC
- + Built-in wardrobes





Bedroom 5

Situated on the ground floor, this cosy bedroom is decorated in a palette of browns & creams with views across the piste.

- + Superking or Twin beds
- + En-suite bathroom with walk-in shower, sink & separate WC
- + Built-in wardrobes



Bedroom 6

Situated on the ground floor, this well proportioned bedroom is decorated in warm apricot tones and has a lightwell for a window to allow in natural light.

- + Superking or Twin beds
- + En-suite bathroom with walk-in shower, sink & separate WC
- + Built-in wardrobes

Chez Bugi



WHITE MOUNTAIN
CHALETs

The large and spacious living areas are light filled and decorated throughout in a contemporary alpine style, using charcoals and neutral tones, lots of local wood and textured natural materials.

Living Areas

Relax in the very large corner sofa beside the triple aspect glass fire place. Entertainment includes a wall-mounted Smart TV receiving UK satellite programs, as well as a DVD player and selection of DVDs.

Listen to music on the Sonos music system, peruse our collection of books or why not even play one of the many board games?

There's a great circular chair for curling up in and reading a book.




The open plan dining area flows across from the kitchen and provides the perfect entertaining space with bone china crockery and crystal glassware.

Chez Bugi



WHITE MOUNTAIN
CHALETs



Chez Bugi enjoys a hot tub on the wraparound terrace with view of the mountains as well as some outdoor seating for curling up with a coffee or G&T, looking towards the slopes.

Boot Room

On the first floor you'll find the boot room with direct piste access. Heated boot warmers and ski racking as well as benches for getting yourself ready in the morning.

On the ground floor is the sauna & shower and access to the covered terrace if you want a bit of quiet time or to shelter from any snowfall.

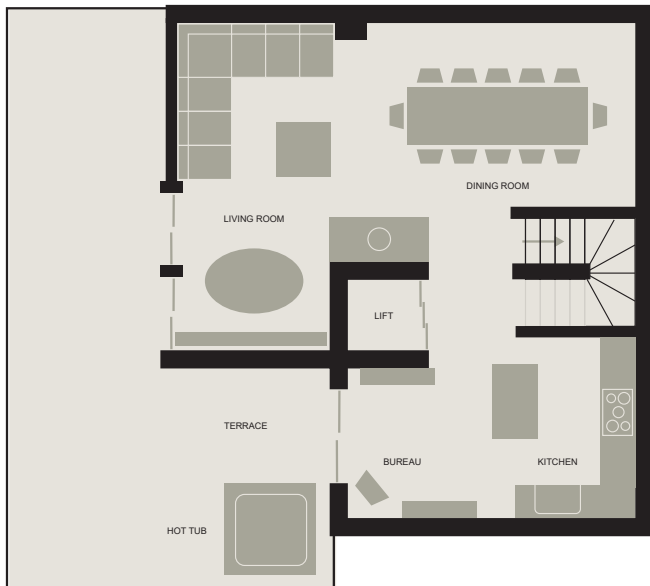


Chez Bugi has the luxury of a lift between all floors so if your legs are feeling weary from all the skiing there is no need to hobble between the floors!

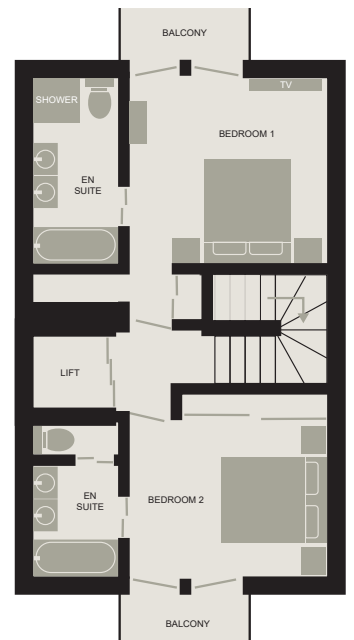


Ground Floor

First Floor



Second Floor



Third Floor