



Chalet Constantia is located in the village of St Martin de Belleville and sits in an enviable position, overlooking the Belleville valley with uninterrupted valley and mountain views. Spread across four floors, this luxury private chalet offers everything you might need for a pampered holiday in the mountains.

What's included?

- + A talented & dedicated staff team of fine dining chef, professional host(s) and chauffeur, together within-resort management team
- + In-resort chauffeur service from 8am - 11pm (St Martin de Belleville village only)
- + Luxury accommodation
- + Spa facilities: hot tub and sauna on the ground floor terrace
- + Breakfast and afternoon tea on 7 days
- + 5 course dinner on 5 nights (your chalet chef and host(s) have two nights off)
- + A carefully selected choice of premium wines
- + Champagne reception on first evening
- + Complimentary bar (wine, sparkling wine, spirits, beers, soft drinks and mixers)
- + Artisan gin bar
- + Egyptian cotton linen, towels, bathrobes and slippers. (Towels are changed mid-week on request)
- + Luxury toiletries
- + Housekeeping on each day of your stay
- + Wi-Fi
- + Dorm bunkroom with games room
- + TV snug / cinema with British Satellite TV
- + Sonos music system in the main living area
- + Lift between all floors
- + Off-street parking



Chalet Constantia

WHITE MOUNTAIN
CHALETs

The luxury spacious bedrooms have been beautifully designed mixing modern lines and furniture with local artisan soft furnishings, with each room having its own distinct look.

Bedroom 1 (Master)

Located on the first floor and with two balconies this large dual aspect master room is light filled from the floor to ceiling windows and is beautifully furnished with an intimate seating area and desk.

- + Emperor bed
- + En-suite bathroom with bath, walk-in shower, double sinks & WC
- + Built-in wardrobes & dressing area
- + Balconies overlooking the valley
- + Seating area and desk



Bedroom 2

Located on the first floor and with views down the Belleville valley this room enjoys floor to ceiling windows as well as balcony access.

- + Superking bed
- + Balcony overlooking the Belleville valley
- + Built-in wardrobes
- + En-suite bathroom with walk-in shower, double sinks & WC



Chalet Constantia



WHITE MOUNTAIN
CHALETs



Bedroom 3

Situated on the first floor, this large bedroom is decorated in a soft palette of sage and taupe and can be set as a superking or twin.

- + Superking bed or twins
- + En-suite bathroom with walk-in shower, double sinks & WC
- + Built-in wardrobes



Bedroom 4

The fourth bedroom located on the first floor has views across to Le Cochet and Le Chatelard and features a superking bed and armchair as well as in-room fitted wardrobes.

- + Superking bed
- + En-suite bathroom with bath, hand held shower, double sinks & WC
- + Built-in wardrobes



Bedroom 5

Located on the ground floor this bedroom can be set up as a superking or twin. It has a gorgeous colour palette of pistachio, pale greys and highlights of burnt orange with luxurious textures and linen curtains and headboard.

- + Superking or Twin beds
- + En-suite bathroom with walk-in shower, double sinks & WC
- + Built-in wardrobes



Bedroom 6

Located on the ground floor with dual aspect windows providing exceptional views down the Belleville valley, this tucked away bedroom provides a superking bedchair.

- + Superking bed
- + En-suite bathroom with walk-in shower, double sinks & WC
- + Built-in wardrobes
- + Terrace Access

Chalet Constantia



WHITE MOUNTAIN
CHALETs

Chalet Constantia is not short of living space with extensive and vast open plan living, dining area, games room and cinema there is no end of cosy and comfortable areas to enjoy on your return from the slopes each day.

Living Areas

Beamed and wood clad vaulted ceilings add to the spacious surroundings along with a floor to ceiling wall of glass at the front of the chalet providing spectacular valley and mountain views.

Large modern sofas, coffee tables and TV and media suite mean you can relax watching your favourite boxset pre-dinner or listen to some music.



The dining area has a very large wooden in-laid dining table which seats 16 for breakfast or dinner and the designer open plan kitchen is where your personal chef will provide sensational food throughout your stay.

Chalet Constantia



WHITE MOUNTAIN
CHALETs

Spa Facilities

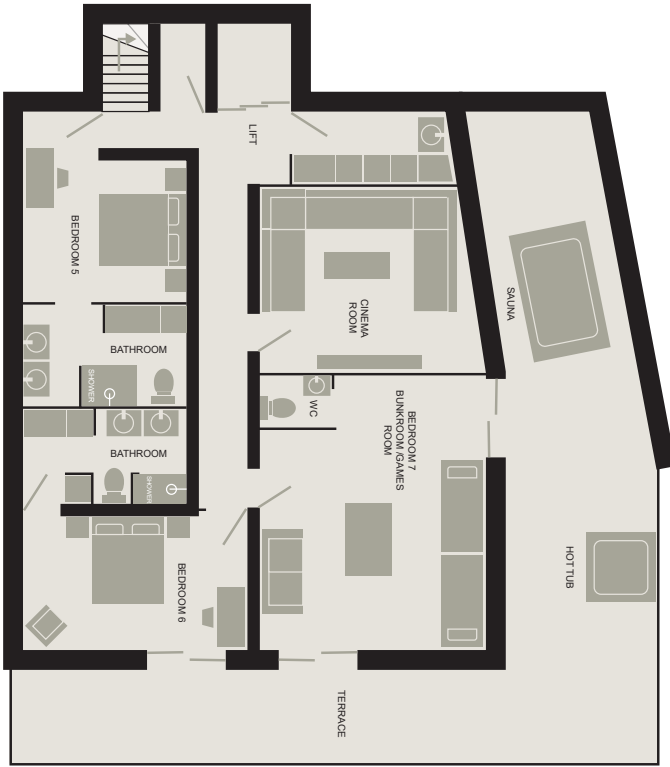
To ease aching muscles there is an outdoor hot tub and sauna on the ground floor terrace, with impressive views of the Belleville valley.

Cinema

Nestled on the ground floor of the chalet you'll find a Cinema Room for snuggling down and watching your favourite movie or TV show and just next door is the Games Room – a great space for the younger members of the group to take up residence.



In addition, Chalet Constantia has the luxury of a lift between all floors so, if your legs are feeling weary from all the skiing or you are less mobile, it is easy and quick to move between the floors of the chalet.



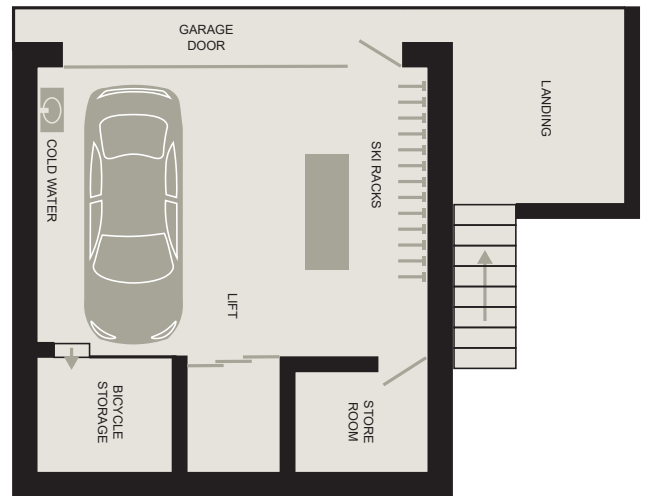
Ground Floor



First Floor



Second Floor



Street Level